

# Use Case | V0 Import Journal Entries | Cloud FTP Location/Oracle Financials Cloud (ERP Cloud)

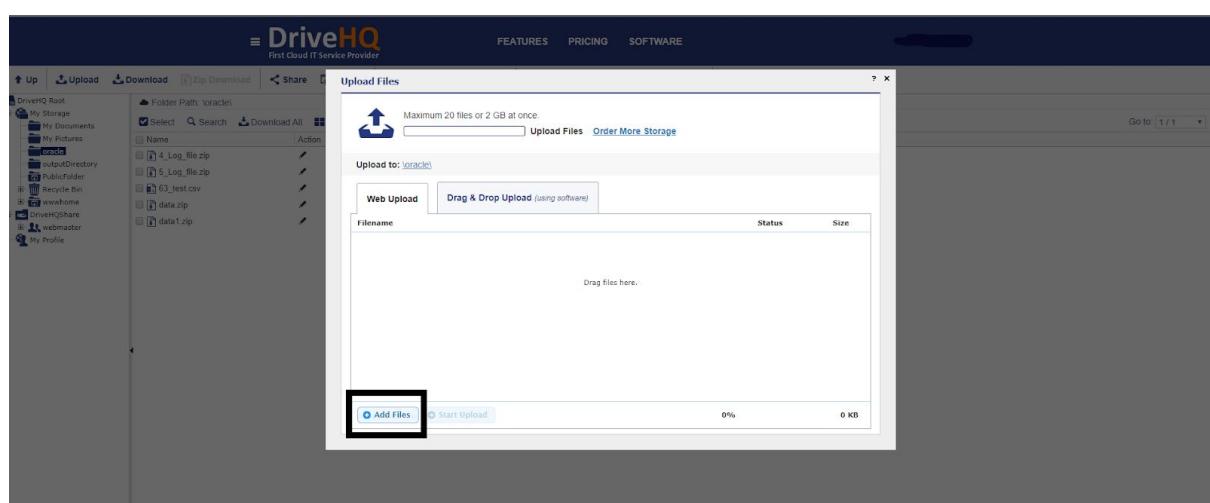
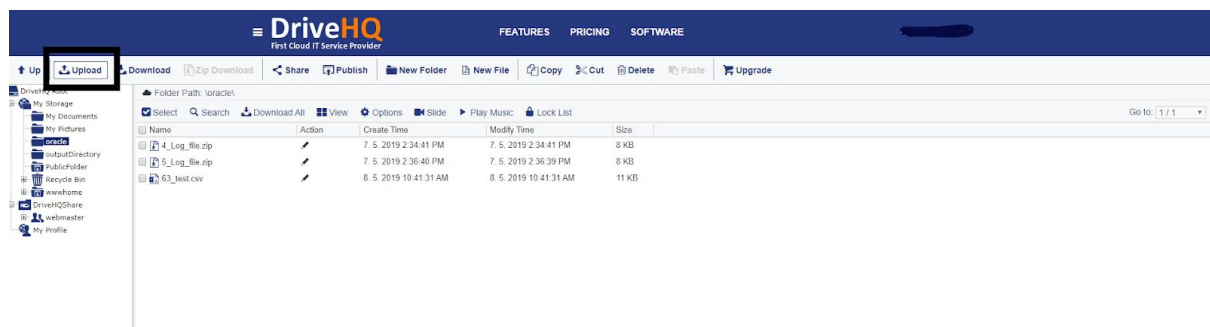
This is an integration flow where a file from an FTP server is downloaded to Oracle Integration Cloud, processed and sent to Oracle Financials Cloud (ERP Cloud).

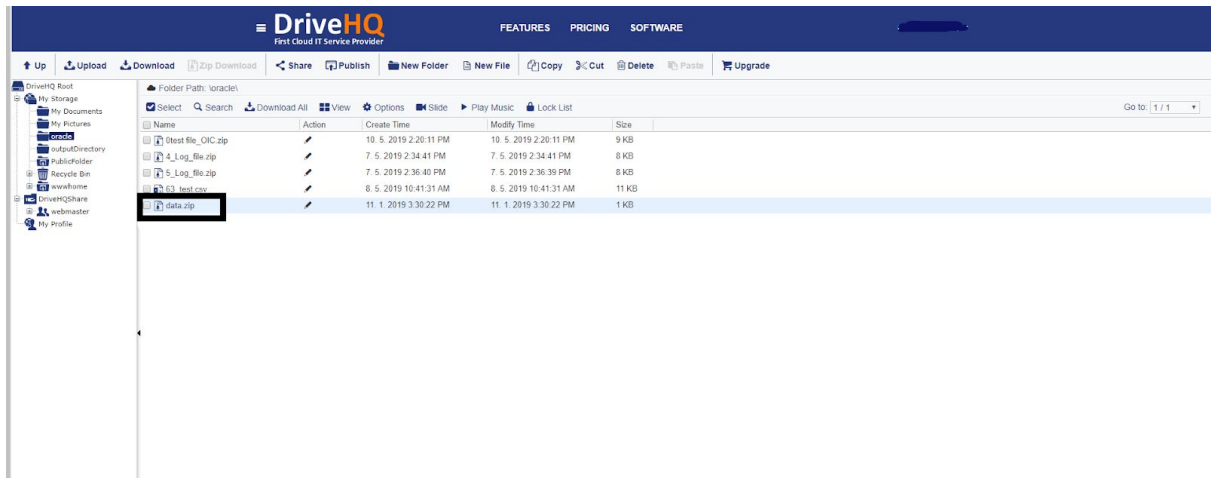
This is a scheduled driven orchestration.

Then the application driven orchestration comes, where a log file is uploaded in Oracle Integration Cloud, processed and uploaded back into the FTP server.

This flow is a combination of scheduled and application driven orchestrations.

1. A user **logs in** their account at their FTP server using a valid user name and password and uploads their .zip file.

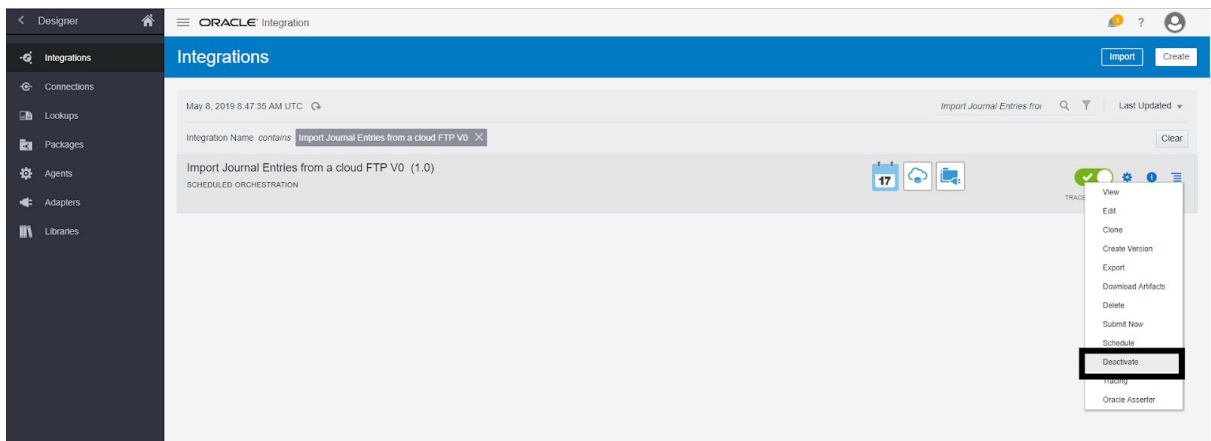




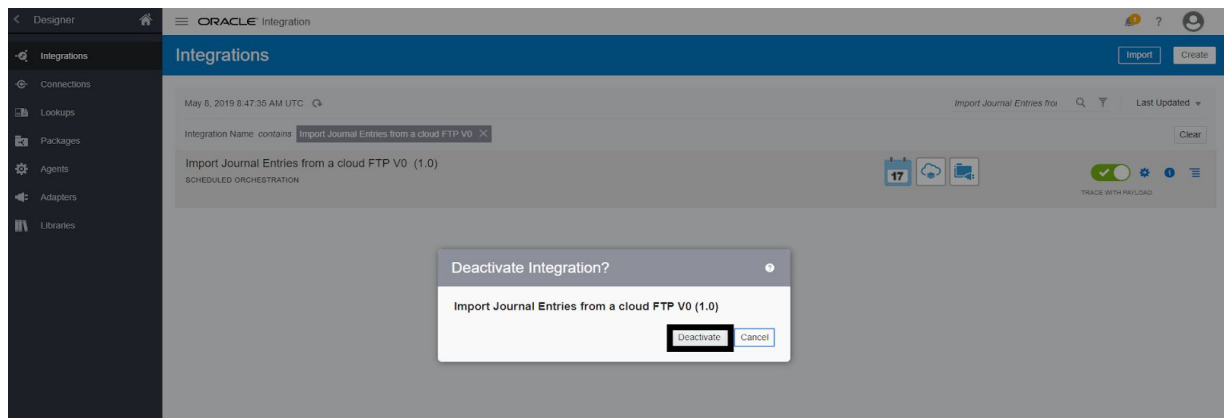
2. **Logs in** their OIC service as an admin user and opens the “Integrations” page.

2a. Selects **Import Journal Entries from a cloud FTP V0 (1.0)**. Note: To configure the integration it must be deactivated.

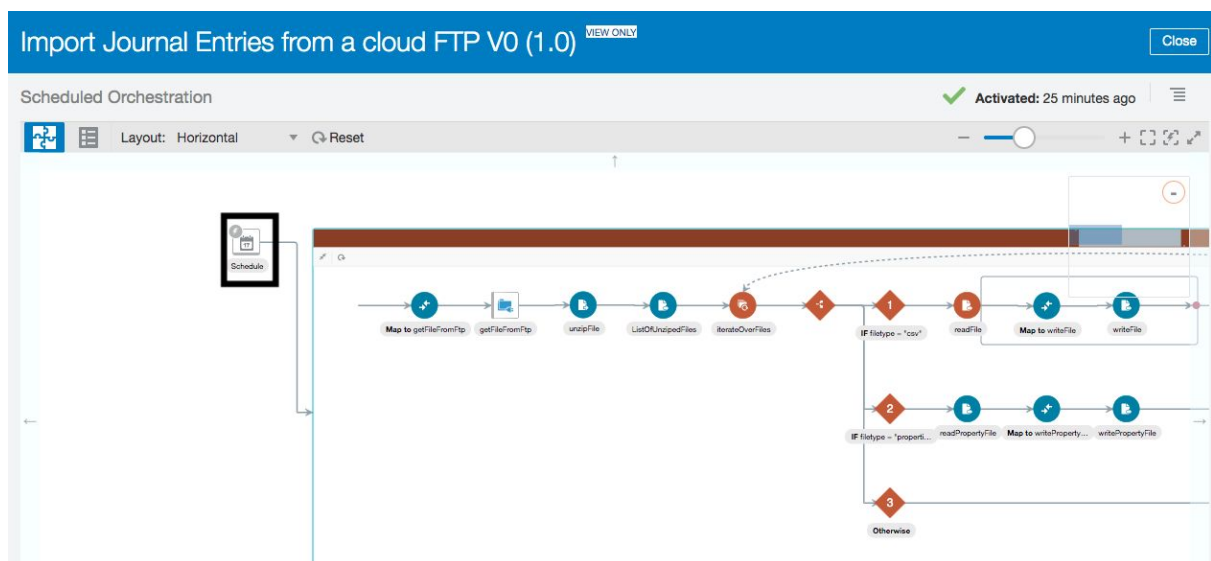
2b. To deactivate the integration from the menu bar on the right selects **Deactivate**.



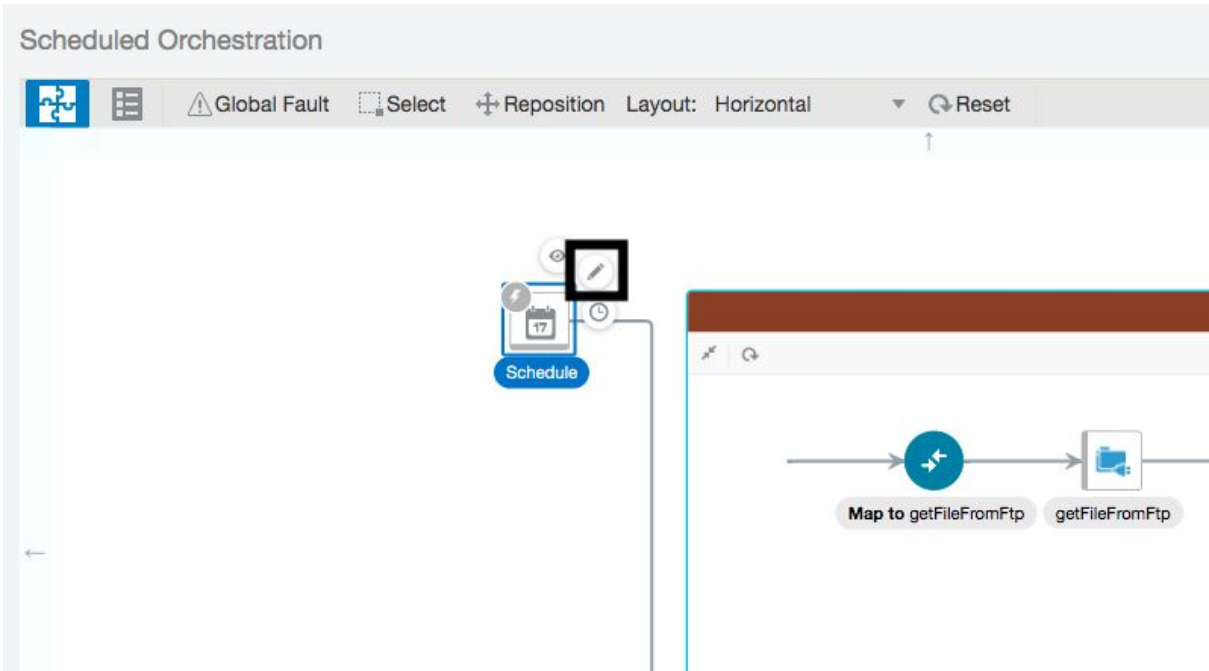
2c. Deactivation window appears - selects **Deactivate**.



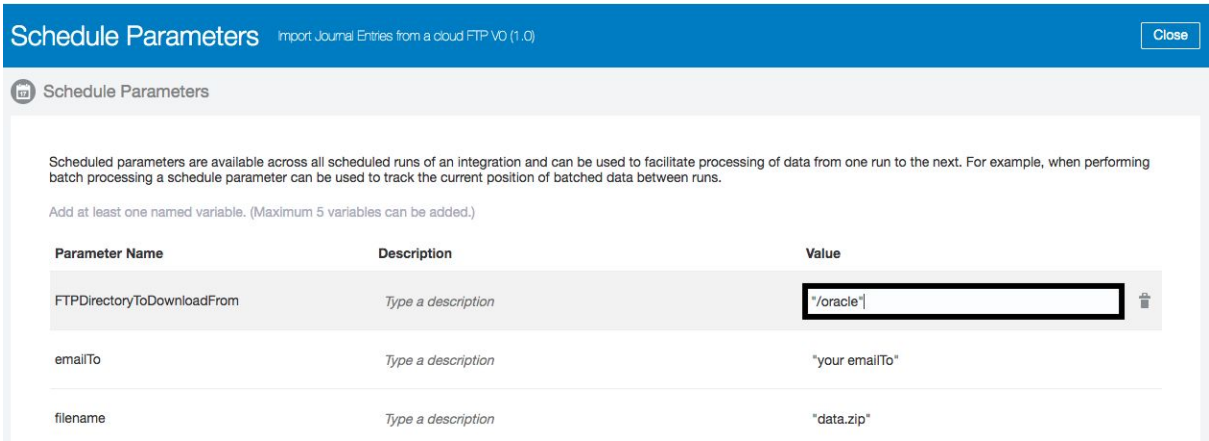
2d. When the integration is deactivated, opens it and clicks on **Schedule**.



2e. Three little icons appear next to it - selects a **pencil** little icon for editing.



2f. She/he will see the Schedule Parameters page, where in the value column adds their value for: **FTPDDirectoryToDownloadFrom**.



2g. Clicks on the row **"emailTo"** and inserts their email to.

Schedule Parameters

Scheduled parameters are available across all scheduled runs of an integration and can be used to facilitate processing of data from one run to the next. For example, when performing batch processing a schedule parameter can be used to track the current position of batched data between runs.

Add at least one named variable. (Maximum 5 variables can be added.)

Parameter Name	Description	Value
FTPDirectoryToDownloadFrom	Type a description	"/oracle"
emailTo	Type a description	<input type="text" value="your emailTo"/>
filename	Type a description	"data.zip"

2h. Clicks on the row **"filename"** and inserts their file name.

Schedule Parameters

Scheduled parameters are available across all scheduled runs of an integration and can be used to facilitate processing of data from one run to the next. For example, when performing batch processing a schedule parameter can be used to track the current position of batched data between runs.

Add at least one named variable. (Maximum 5 variables can be added.)

Parameter Name	Description	Value
FTPDirectoryToDownloadFrom	Type a description	"/oracle"
emailTo	Type a description	"your emailTo"
filename	Type a description	<input type="text" value="data.zip"/>

2i. Clicks **Close**.

Schedule Parameters

Import Journal Entries from a cloud FTP V0 (1.0)

Close

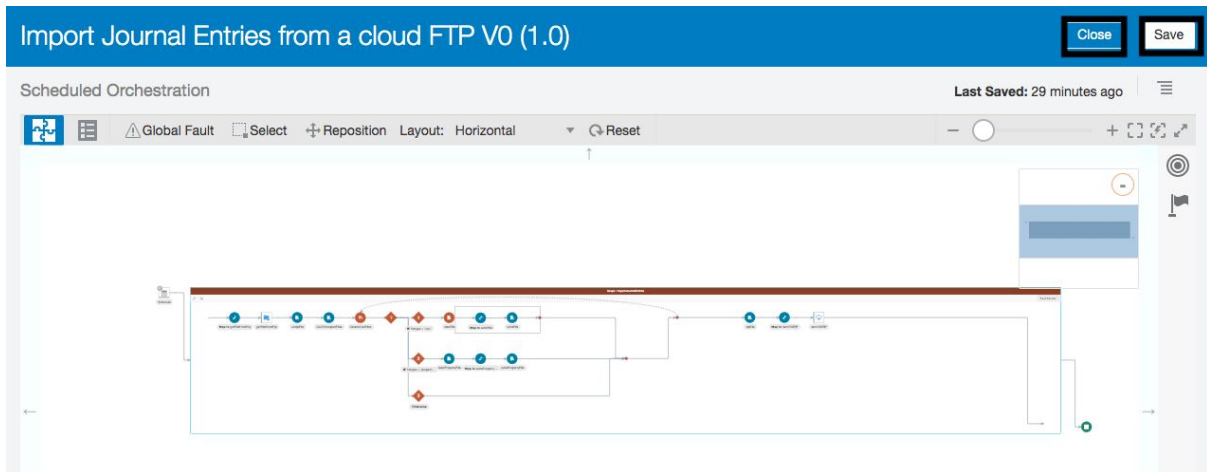
Schedule Parameters

Scheduled parameters are available across all scheduled runs of an integration and can be used to facilitate processing of data from one run to the next. For example, when performing batch processing a schedule parameter can be used to track the current position of batched data between runs.

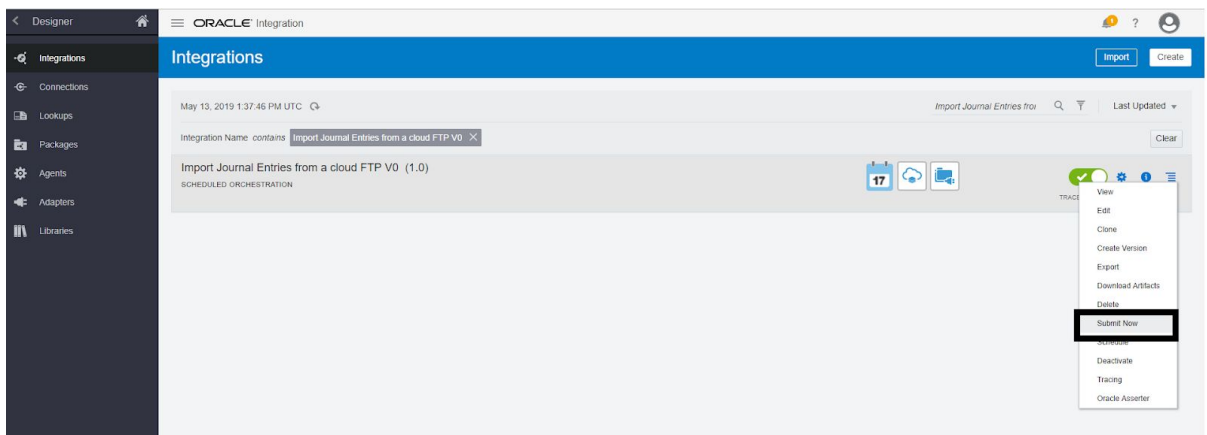
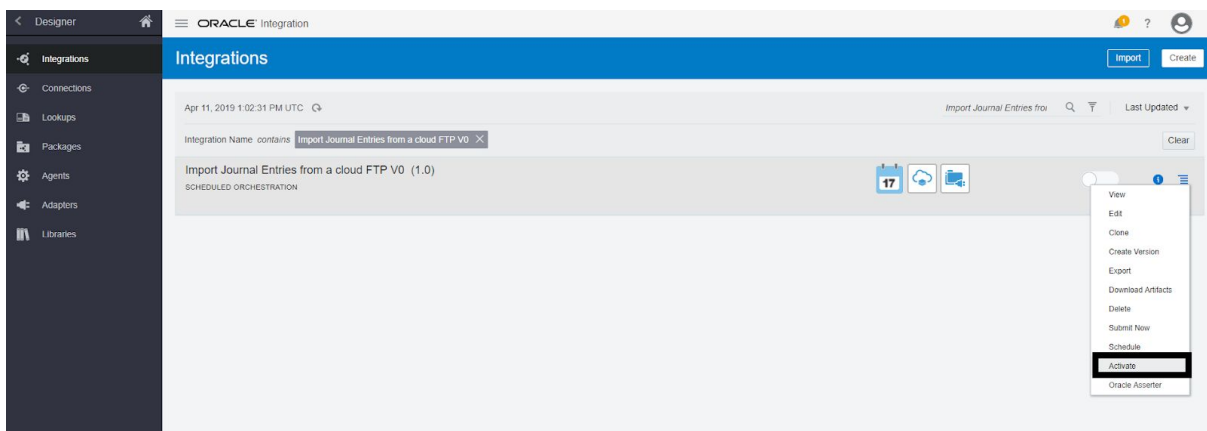
Add at least one named variable. (Maximum 5 variables can be added.)

Parameter Name	Description	Value
FTPDirectoryToDownloadFrom	Type a description	"/oracle"
emailTo	Type a description	"your emailTo"
filename	Type a description	"data.zip"

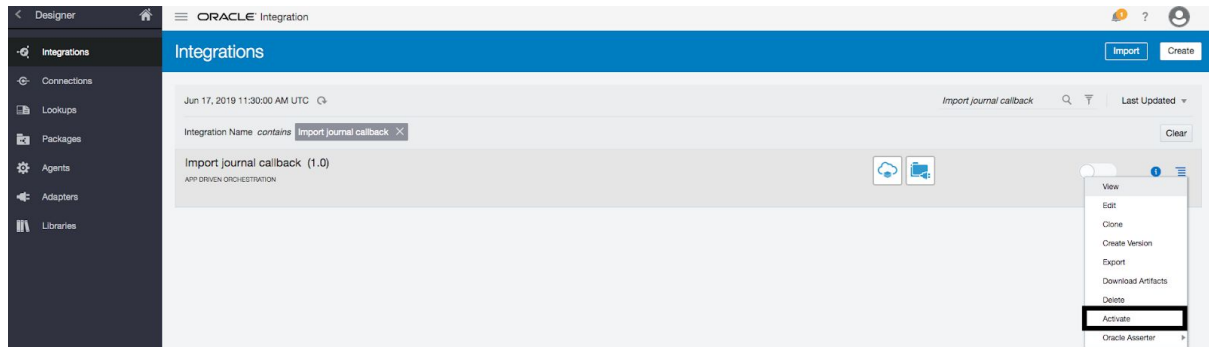
2j. On the main integration flow page clicks **Save** and then **Close**.



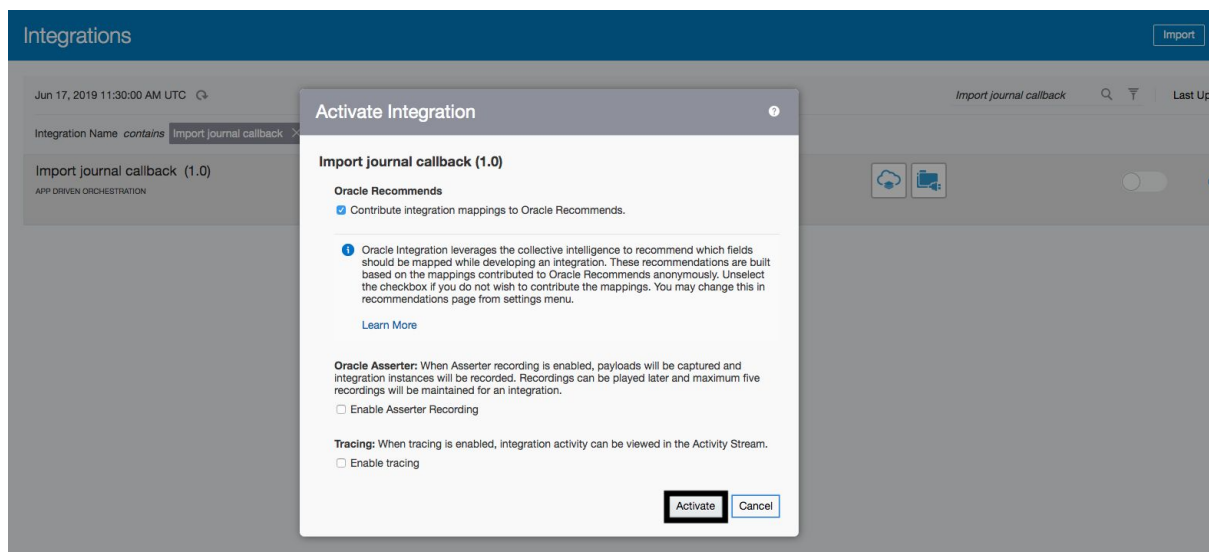
3. Now she/he needs to **Activate** the flow and **Submit** it.



- Next she/he needs to **Activate** the flow called **Import journal callback (1.0)**, selects **Activate** from the menu bar on the right hand side - the on/off icon will go green when activated.

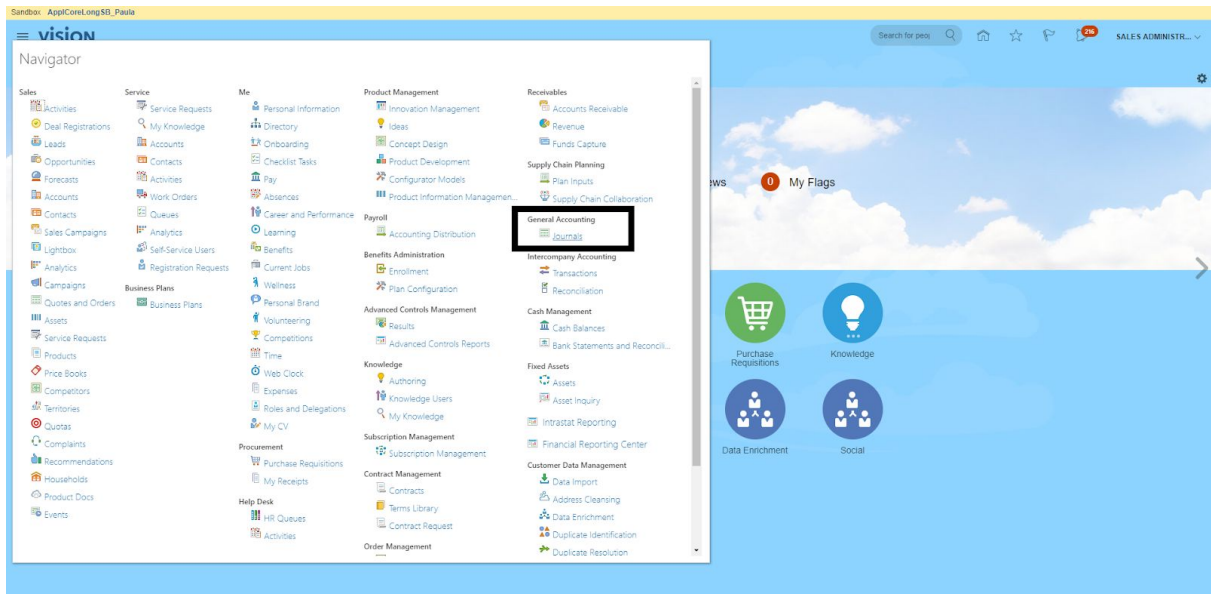


- Chooses to “**Activate**”.

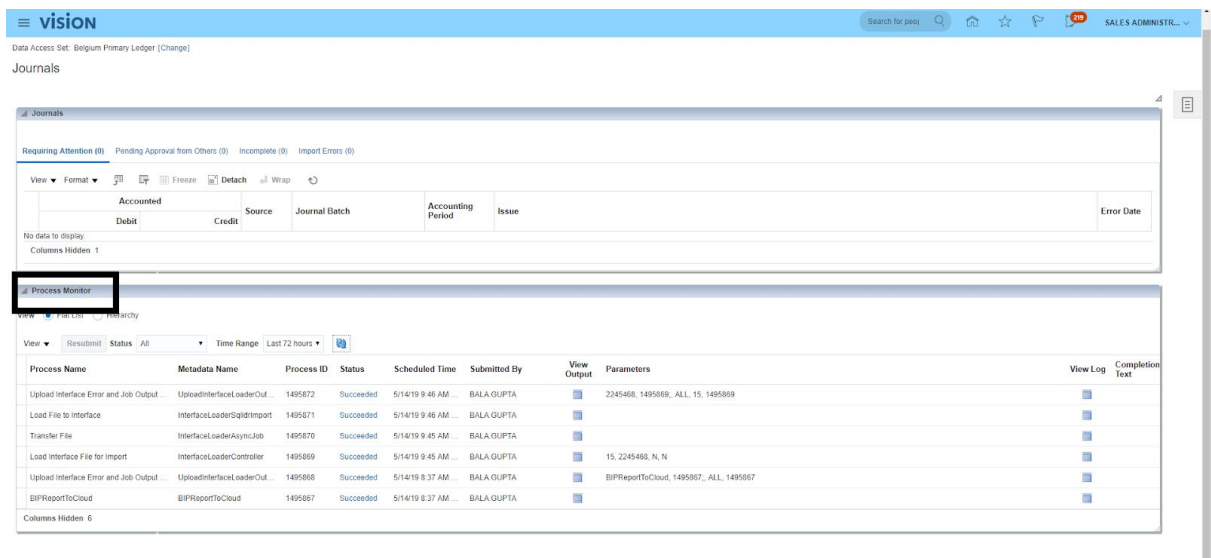


## The ERP side of this flow.

- The user **logs in** their account at Oracle ERP Cloud using a valid user name and password and from the Navigation bar Menu selects **General Accounting** and then **Journals**.



2. Checks the **Process Monitor** and finds a process for their file.



3. **Logs in** their account at their FTP server using a valid user name and password.

4. She/he can see, the log file has been created in FTP according to the ERP file.



DriveHQ

First Cloud IT Service Provider

FEATURES

PRICING

SOFTWARE

Up

Upload

Download

Zip Download

Share

Publish

New Folder

New File

Copy

Cut

Delete

Paste

Upgrade

DriveHQ Root

My Storage

My Documents

My Pictures

My Music

PublicDirectory

PublicFolder

Recycle Bin

newhome

DriveHQShare

webmaster

My Profile

Folder Path: /oracle/

Select

Search

Download All

View

Sorting

Options

Slide

Play Music

Lock List

Go to: 1 / 1

Name	Action	Create Time	Modify Time	Size
4_Log_8le.zip		7. 5. 2019 2:34:41 PM	7. 5. 2019 2:34:41 PM	8 KB
4_Log_8le.zip		7. 5. 2019 2:36:40 PM	7. 5. 2019 2:36:39 PM	8 KB
6_1_log_8le.zip		10. 5. 2019 2:59:39 PM	10. 5. 2019 2:59:39 PM	8 KB
6_1_log_8le.zip		8. 5. 2019 10:41:31 AM	8. 5. 2019 10:41:31 AM	11 KB
6_1_log_8le.zip		11. 1. 2019 3:30:22 PM	11. 1. 2019 3:30:22 PM	1 KB
data1.zip		28. 1. 2019 3:02:08 PM	28. 1. 2019 3:02:07 PM	2 KB

.